

Chief Patrons

Hon. Shri Arvind Gavali
Chairman, Samarth Educational Trust

Hon. Shri Nishant Gavali
Secretary, Samarth Educational Trust

Patrons

Mr. Vaibhav Raut

Campus Director, Sawkar Institutes

Dr. Hanmant V. Shete

Principal, Arvind Gavali College of Engineering

Co-ordinator

Dr. Gayatri Mirajkar

Dean (R&D), AGCE, Satara

Mobile: 9860361553

Email: gayatri.mirajkar@agce.edu.in

Co-Coordinator

Mr. A. T. Bhosale

Assistant Professor, AGCE, Satara

Mobile: 8275914209

Email: abhijeet.bhosale@agce.edu.in

Ms. Nikita Bhilare

Assistant Professor, AGCE, Satara

Mobile: 8767448935

Email: nikita.bhilare@agce.edu.in

Organizing Committee

Dr. V. S. Hingmire

Mr. S. P. Patil

Dr. A. N. Khadtare

Dr. B. M. Nayak

Dr. V. K. Bhosale

Dr. S. Y. Mulla

Mrs. A. D. Kasture

Dr. M. M. More

Mr. R. N. Sapkal



Eligibility

The program is open to the Faculty of AICTE approved Institutions, Research Scholars, PG Scholars, Participants from Government and Industry interested in the field of Machine Learning Applications in Health 5.0.

Certification

E-certificate will be awarded to all participants upon successful completion of feedback forms and quiz.

80% attendance is mandatory.

How to Apply

The registration can be done online via the link given below:

<https://forms.gle/GP2SYBKvN49YPubd9>

Important Dates

Last Date of Registration: 09th February 2025

Date of FDP: 11th of February 2025 to

15th of February 2025



ISTE Approved

Faculty Development Programme

On

**Emerging Machine Learning
Techniques in Healthcare 5.0**

In Online Mode

On

11/02/2025 to 15/02/2025

Organized by

R&D and IPR Cell, AGCE IIC

In Association with

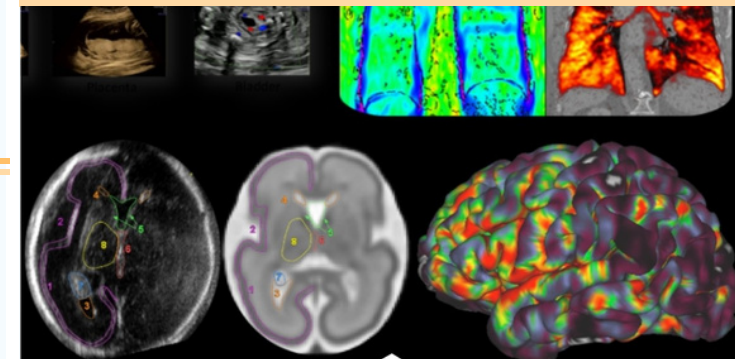
ISTE, New Delhi

SAMARTH EDUCATIONAL TRUST

ARVIND GAVALI COLLEGE OF

ENGINEERING

NBA and NAAC Accredited



About the Trust

Samarth Educational Trust established in 1988 in Satara is a prime educational center for imparting quality education to students and budding professionals in the field of Medical, Pharmacy and Engineering education particularly for rural areas in western Maharashtra. The trust endeavors to provide students with all the necessary knowledge and skills to become truly successful in the chosen field.

About the Institute

Arvind Gavali College of Engineering (AGCE), established in 2010 under Samarth Educational Trust is a premier institute in western Maharashtra imparting quality engineering education to students belonging to both rural and urban background. The institute is accredited by NAAC in the year 2023. The CSE department and Mechanical Engineering department are accredited by NBA in the 2023. AGCE is one of the most rapidly evolving engineering institutes having permanent affiliation with Dr. Babasaheb Ambedkar Technological University, Lonere, Raigad. The institute provides excellent educational opportunities in a dynamic learning environment to bring out well cultured professionals in the conventional as well as emergent technologies. The institute also has a sprawling campus and houses a comprehensive library catering to the need of students belonging to six branches. AGCE is committed to maintain an utmost academic standard, incorporated with the conduct of discipline, thereby achieving remarkable and excellent percentage of results.

Sawkar Institutes

Address: 427, Shanivar Peth, Behind Sawkar Transport,



9957100100

Satara



9069700100

About the FDP

Healthcare 5.0 or Health 5.0 is an evolving and very new field. Health 5.0, the new inevitable step of the health industry is a mindset shift: from patient relationship management to patient-managed relationships. Machine Learning (ML), the most popular technology among all data scientists and machine learning enthusiasts occupies a cardinal position in advancing Health 5.0 to new frontiers. ML has significantly enhanced the capabilities and facilities of Health 5.0, creating the area of "Smart Healthcare." The FDP focuses on the application of ML-based approaches in several healthcare fields such as radiology, neuroimaging, medical robotics, disease prediction. Discussions will also be carried out on the most common challenges faced by researchers and industry personnel that can provide some solutions to real world challenges. Hands-on sessions are also included in the FDP schedule to enhance the knowledge of ML applications in healthcare. The sessions are designed to explore the applications of ML in biomedical signal and image analysis.

Course Objectives

- To introduce the foundations and state-of-the-art techniques based on ML in the domain of Health 5.0.
- To impart knowledge about practical applications of ML in Health 5.0.
- Presentation of case-studies and real-world examples to illustrate the effectiveness of ML-based approaches in Health 5.0.
- To conduct hands-on sessions wherein the participants can engage in applying ML techniques to real-world datasets.
- To include tasks and panel discussions by experts in the field.

Outcomes

- Being introduced with concepts, technologies, systems, devices, etc. associated with the application of ML in Health 5.0.
- Obtain practical experience needed to leverage the cutting-edge technologies for improving healthcare outcomes.
- Become familiar with the ongoing research in the field of ML in Health 5.0.
- Gain insight in the future direction in the applications of ML in the healthcare domain.
- Promote networking among participating members and create foundation for collaborative research projects involving ML and healthcare.

Mode of Conduction

Online through Zoom/Google Meet platform. Session link will be shared at the time of session on the WhatsApp group.

Instructions

- Registration fee is Rs. 100/-
- Participants will be selected on first come first basis.
- Only online registration. You can use the QR code below for registration.

